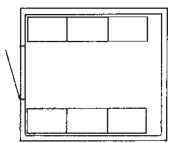


Smart Shelter

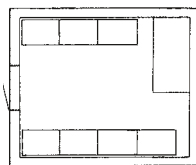


Design:

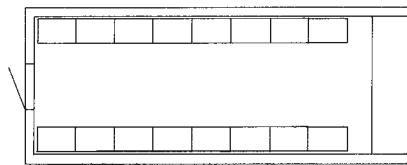
The Smart Shelter is designed with sandwich technology, to provide a light and economic protection, with a controlled inside environment for your electric, radio or telecom equipment. The Smart Shelter provides proven trouble free service in artic, dessert or tropic conditions. The Smart Shelter can be delivered in a variety of configurations, from the compact Flat Pack, delivered in transport crates for assembly on site, to a completely equipped turnkey installation. All installations are installed and configured according to your choice. The Smart Shelter is designed and manufactured in accordance with ISO 9001, and 14001.



SM7 floor layout example



SM12 floor layout example



SM20 floor layout example

Shelter sizes	External dimensions (mm)			Internal dimensions (mm)			Number of cabinets 600x400	Weight* (kg)
	length	width	height	length	width	height		
SM5	1520	1900	2582	1432	1812	2303	4	450
SM7	2160	1900	2582	2072	1812	2303	6	540
SM10	2991	2438	2582	2903	2350	2303	8	760
SM12	3591	2438	2582	3503	2350	2303	10	920
SM15	4525	2438	2582	4437	2350	2303	12	1010
SM20	6058	2438	2582	5970	2350	2303	16	1260

*Weights for steel facings

Options: External height 2400 mm, with internal height 2121 mm. Flat Pack, delivered for assembly on site.

Technical Specifications



Smart Shelter:

Floor: Reinforced sandwich panel with a bottom lacquered steel plate, HFC free foam core and on top, high grade plywood with water proof and non slip surface.

Walls: Sandwich panel with HCFC free foam core with a choice of different facings: lacquered steel, lacquered aluminum or GRP (Glassfibre Reinforced Polyester laminate)

Ceiling: Sandwich panel, equal to walls

Roof: Sandwich construction.

Thermal insulation: U-value: less than 0,6 W/m² K

Color: Outside RAL 7035 grey or RAL 9010 white, Inside RAL 9010 white, or according to your specification.

Entrance: Entrance door 700/ 900x2000 mm



Options:

Below some examples of options,

AC- power distribution board

Interior lighting

Cable shutes and cable inlets

Antistatic or ESD safe plastic carpet

Entrance roof