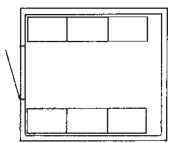


Safe Shelter

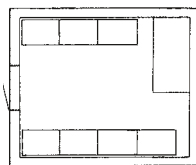


Design:

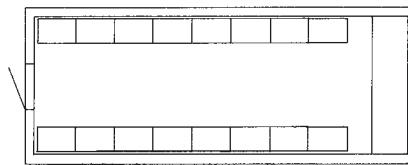
The Safe Shelter is designed with reinforced sandwich technology within a ISO frame for easy transport. The safe Shelter provides a complete and proven high secure protection including EMC and EMP, with a controlled inside environment for your electric, radio or telecom equipment. The Safe Shelter is designed and reinforced for mounting a tower or mast on the roof. All installations are installed and configured according to your choice. The shelter is designed and manufactured in accordance with ISO 9001 and 14001



SA7 floor layout example



SA12 floor layout example



SA20 floor layout example

Shelter sizes	External dimensions (mm)			Internal dimensions (mm)			Number of cabinets 600x400	Weight (kg)
	length	width	height	length	width	height		
SA5	1520	1900	2591	1392	1772	2347	4	1060
SA7	2160	1900	2591	2032	1772	2347	6	1220
SA10	2991	2438	2591	2863	2310	2347	8	1720
SA12	3591	2438	2591	3463	2310	2347	10	2030
SA15	4525	2438	2591	4397	2310	2347	12	2340
SA20	6058	2438	2591	5930	2310	2347	16	3150
SA30	9125	2438	2591	8997	2310	2347	26	4050
SA40	12192	2438	2591	12064	2310	2347	36	4620

Technical Specifications



Safe Shelter:

Floor: Sandwich panel, equal to walls with antistatic plastic carpet on top.

Walls: Sandwich panel with HCFC free foam core with continuously welded and lacquered steel facings on in and outside:

Ceiling: Sandwich panel, equal to walls

Color: Outside RAL 7035 grey or RAL 9010 white, Inside RAL 9010 white, or according to your specification.

Thermal insulation: U-value: less than 0,6 W/m² K

Entrance: Entrance door 900x2000 mm



Options:

AC- power distribution board

Interior lighting

Cable shutes and cable inlets

Below some examples of options,

ESD safe plastic carpet

Entrance roof 1060x1400 mm

Entrance Stepladder

Door barrier

Outdoor light

Outdoor Earthing

